



Investor Conference

Tatung System Technologies Inc.

2025/05/20



Disclaimer

This presentation and the concurrently released materials contain forward-looking statements derived from both internal and external sources. The Company's actual future operating results, financial condition, and business outlook may differ materially from those expressed or implied by such statements, due to various risks beyond the Company's control. These forward-looking statements reflect the Company's perspective as of the date of this presentation. The Company undertakes no obligation to update or revise these views in the future.

Agenda



- Company Overview / Core Business and Services
- Business Performance
- Industry Trends and Market Opportunities
- Growth Strategies
- Corporate Governance and Sustainability
- Q&A

Company Overview

Our vision is to become a benchmark enterprise in ICT innovation and service competitiveness.

Delivering integrated solutions that generate outstanding customer experiences and business outcomes.

Employees

550

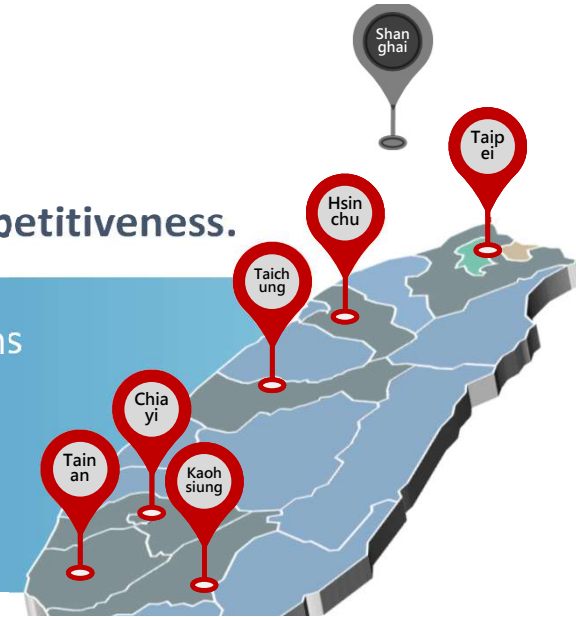
Innovation, Service,
Teamwork, Integrity

4

Core Values

Service locations

7



Mission

- Committed to dual transformation through sustainability and digitalization delivering integrated solutions.
- Customer-centric and service-oriented, we provide enterprises with comprehensive intelligent transformation services.

Focus
Field

AI-Empowerment Solution
ACE SI ICT Integration

Revenue
NTD. 39.3
Billion
(Consolidated)

2000

Spun off from TATUNG
and established as TSTI
TWSE/TPEX : 8099 (Listed 2004/03)



2008

Established
「Chyun Huei」

2012

Established
「tsti Shanghai Co. Ltd.」

2015

Mergers and acquisitions
「TISNet Technology Inc.」

2025

Core Business and Services

➤ Main Solution

- AI service integration expert
- Cloud integration & Services
- ESG Ecosystem Integration
- tiCC Smart medical
- tiCC intelligent customer service
- Smart Surveillance

➤ Main products

- Modern data center
- Endpoint and peripheral equipment
- Software/Technical Services/Education and Training
- Communication collaboration/network/information security

OneAi



OneCloud



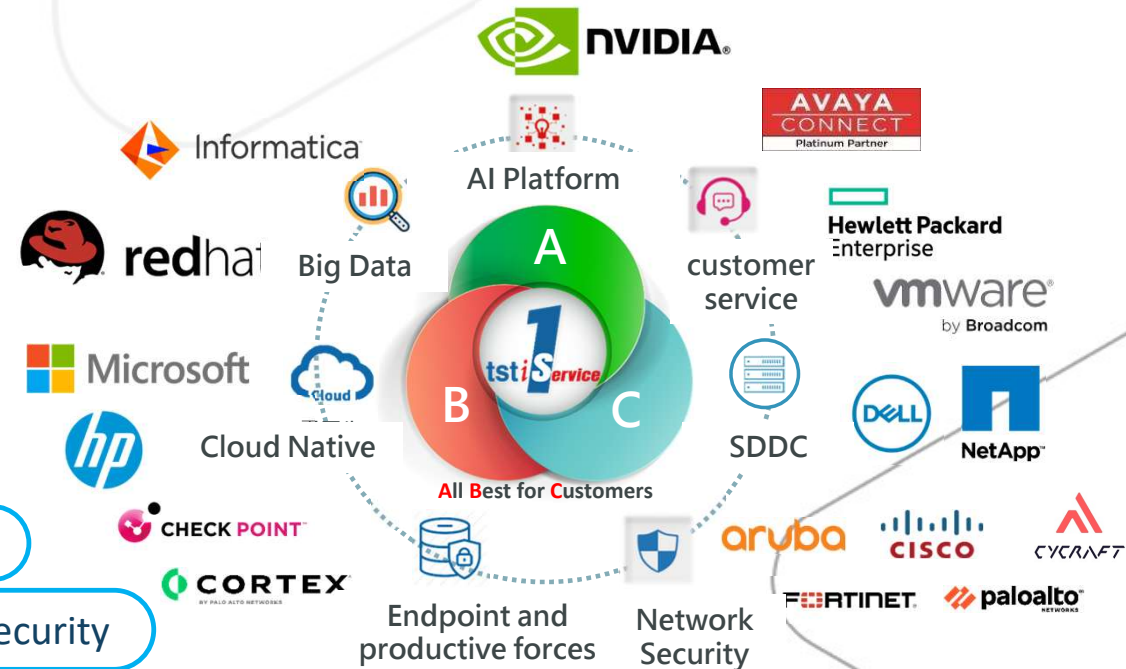
ESG AIoT



OneService



Partners



Enabling Industry Smart Transformation through AI Empowerment



Ecosystem and OEM/ODM Partner Collaboration

Comprehensive Technical Solutions

OneAi

- 算力、管理、數據、AI應用
- 企業級AI專家助手平台、產業專用AI平台整合服務
- AI資源管理標準版、AI資源管理進階版



Network Security

- Endpoint端點資訊安全
- Network網路資訊安全
- Application應用系統資訊安全
- Cloud雲端資訊安全



Modern Work

- 使用為中心 User Centric
- 智慧終端 Productivity
- 智慧協作工具 Experience
- 資安資產管理 Security
- 雲端應用高效連結 Connect



Modern DC

- 容器資訊平台
- 大數據混合雲
- 能源效率與綠色運營
- 智能管理與自動化
- 邊緣計算Edge Computing



UC Collaboration

- 整合不同通信技術，更高效的協作和溝通
- 提升企業內部協作效率，提升員工的工作體驗
- UC工具結合全面協作，即時共享團隊協作



Smart Surveillance

- 安防全面整合，數據共享
- 彈性擴充智慧管理，降低錯誤風險
- 數位安防即時告警，高效決策



OneService

Comprehensive Technical Solutions – From AI to Endpoint

Recent Recognitions and Awards



Award	Year	Awarding Organization
Platinum Award – Sustainability Report	2024	TCSA
ESG Supplier Excellence Award	2024, 2022, 2021	Fubon Financial Holdings
Best Carbon Reduction Partner	2024	Taiwan Mobile
Best AI System Provider	2024, 2023	CSEA
Sports-Friendly Enterprise Certification	2024, 2021	Ministry of Education
Golden Award (Tech Innovation – 2nd Place)	2023	CISA
Excellent Supplier in ESG Assessment	2024	Yuanta Financial Holdings
CIO Elite Vendor Award	2022–2025	CIO Taiwan
Golden Award (Aging Tech – 3rd Place)	2024	CISA
Smart City Innovation Award	2023	Smart City Taiwan
Smart Transportation Award – Winner	2023	Smart City Taiwan

Agenda



- Company Overview / Core Business and Services
- Business Performance
- Industry Trends and Market Opportunities
- Growth Strategies
- Corporate Governance and Sustainability
- Q&A

Business Performance

Condensed consolidated balance sheet

Unit: NT\$ thousand, except EPS

Items	2025/3/31		2024/3/31	
	Amount	%	Amount	%
Cash and cash equivalents	841,061	30	665,029	22
Notes and accounts receivable & Contract assets	828,836	30	903,834	30
Inventories	528,313	19	615,347	21
Property, plant and equipment	60,805	2	78,580	3
TOTAL ASSETS	2,785,419	100	2,979,312	100
Current liabilities	1,077,992	39	1,234,522	41
TOTAL LIABILITIES	1,237,429	44	1,463,701	49
SHAREHOLDERS' EQUITY	1,547,990	56	1,515,611	51
Net value per share (NTD)	17.48		17.11	

Business Performance Condensed Consolidated Income Statement

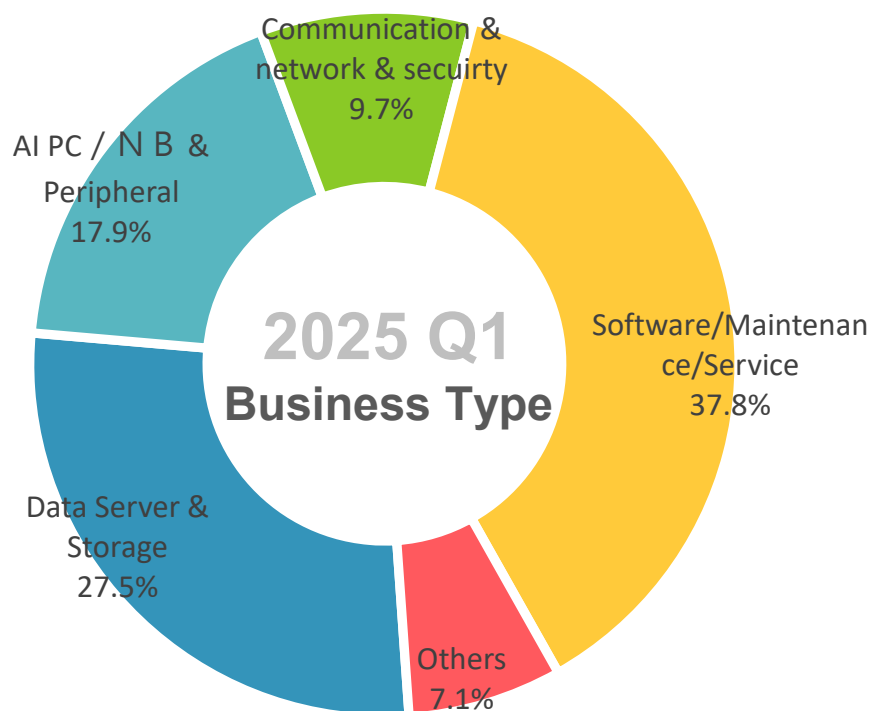
Unit: NT\$ thousand, except EPS

	2025Q1		2024Q1		YoY
	Amount	%	Amount	%	
Net Operating Revenues	908,024	100.0	906,212	100	↑ 0.20%
Gross Profit	222,691	24.5	209,495	23.1	↑ 6.30%
Operating Expenses	170,637	18.8	174,152	19.2	(2.02%)
Operating Income	52,054	5.7	35,343	3.9	↑ 47.28%
Nonoperating Income and Expenses	(1,260)		23,873		
Net income before tax	50,794	5.6	59,216	6.5	(14.22%)
Net income	39,661	4.4	49,794	5.5	(20.35%)
EPS-before tax(NTD)	0.56		0.67		
EPS-afer tax(NTD)	0.45		0.56		

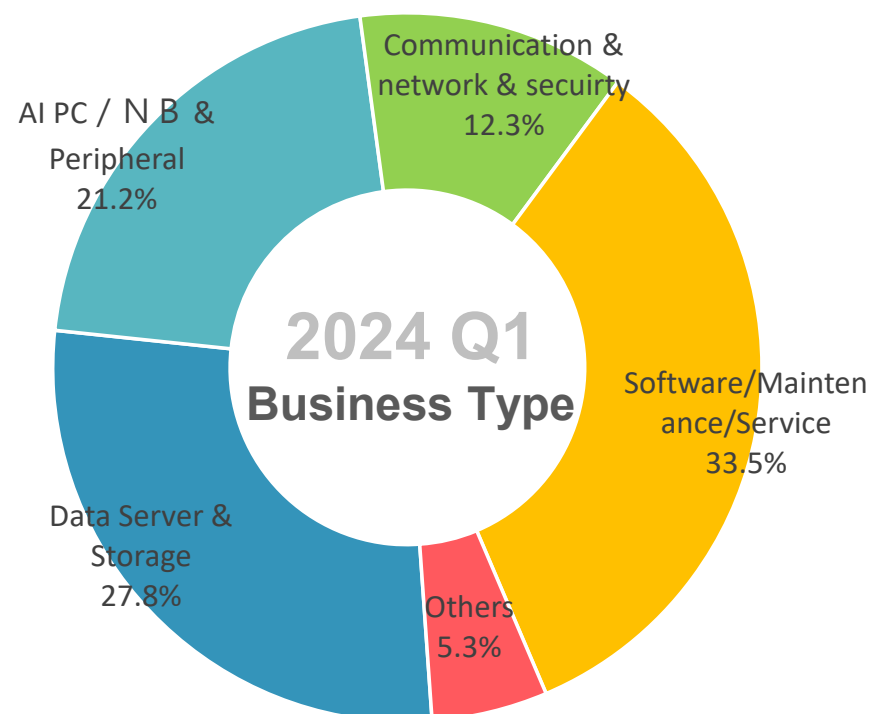
Note: The significant year-over-year change in non-operating income/expense was primarily due to financial valuation losses in 2025, compared with gains in 2024. In addition, R&D subsidies were lower this year. Despite an increase in operating profit of NT\$16.7 million, profit before tax declined by NT\$8.4 million.

Business Performance Revenue breakdown by solution and service

2025 Q1 Business Type

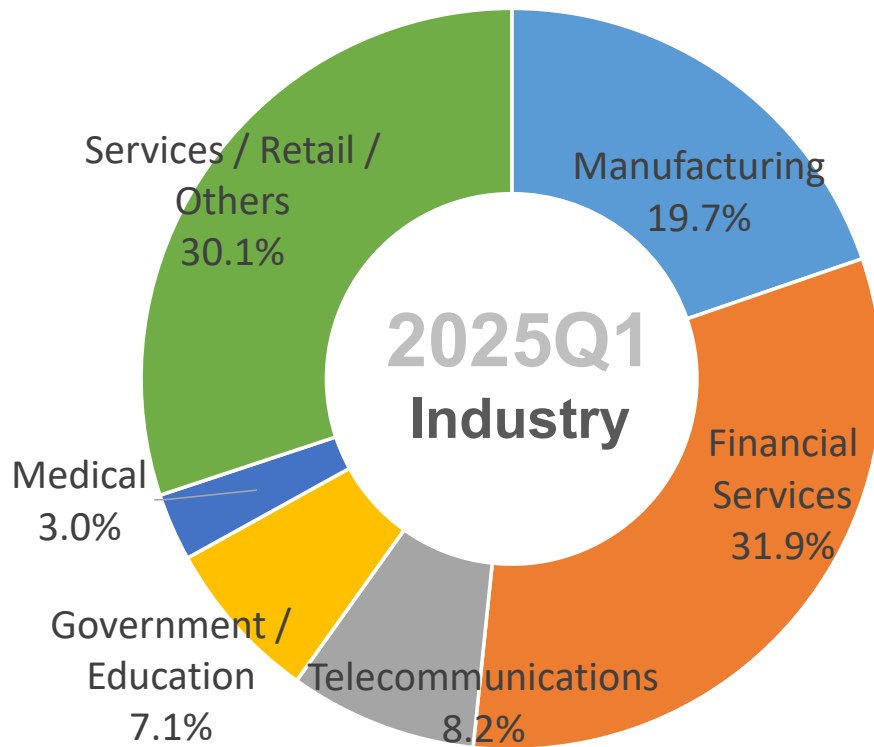


2024 Q1 Business Type

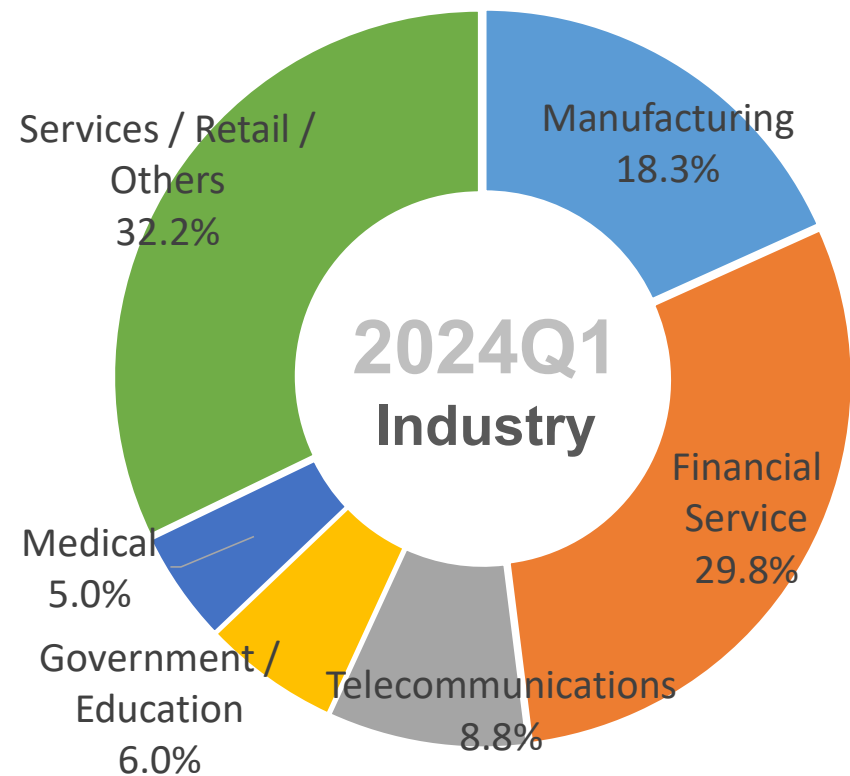


Business Performance Revenue breakdown by industry segment

2025Q1 Customer Industry



2024Q1 Customer Industry



Agenda



- Company Overview / Core Business and Services
- Business Performance
- Industry Trends and Market Opportunities
- Growth Strategies
- Corporate Governance and Sustainability
- Q&A

Industry Trends and Market Opportunities

Organizations	Future Technology Trend Predictions
Gartner	Democratized AI 、 AI Trust, Risk and Security Management (TRISM) 、 AI-Augmented Development 、 Intelligent Applications 、 Augmented Connected Impact 、 Continuous Threat Exposure Management (CTEM) 、 Machine Customers 、 Sustainable Technology 、 Platform Engineering 、 Industry Cloud Platforms
IEEE	Generative AI 、 Machine Learning 、 Natural Language Processing 、 Metaverse 、 AR, VR, MR 、 Cloud-Edge Computing 、 5G 、 Electric Vehicles 、 Real-time Cybersecurity Vulnerability Identification and Attack Defense 、 Supply Chain and Warehouse Automation Computing 、 Quantum Computing 、 Software Development Acceleration 、 Automated Customer Service 、 Digital Avatars and Accelerated Drug Development 、 Fast Search 、 Software 、 Phishing Attacks 、 Insider Threats 、 Sustainable Development
CB Insights	GPU Shortage 、 Multimodal AI 、 Synthetic Data 、 DIY Software Development 、 Quantum Computing Commercialization 、 Cybersecurity Integration 、 Data Security Redefinition 、 AI Drug Race 、 Digital Therapeutics (DTx) and Health Integration 、 New Tech Battlefield - The Brain 、 Banking FOMO 、 Blockchain Financial Services 、 E-commerce AI Sales Agents 、 AI Impact on Gaming 、 Humanoid Robot Manufacturing 、 AI Assisting Retailer Negotiations
Deloitte	Spatial Computing and Industrial Metaverse: Beyond Moore's Law 、 Generative AI as a Growth Catalyst 、 From DevOps to DevEx: Enhancing Engineering Experience 、 Defending Reality: Truth in the Age of Synthetic Media 、 Core Training: From Technical Debt to Technical Health
WEF	Flexible Batteries 、 Generative AI 、 Sustainable Fuels 、 Designer Metaverse for Mental Health Improvement 、 Wearable Biosensors and Devices 、 Spatial omics 、 Flexible Neuroelectronics 、 Quantum Computing 、 AI-Assisted Healthcare

Data Sources: WEF, MIC (Market Intelligence & Consulting Institute) and the ITIS (Industry & Technology Intelligence Services) research team of the Ministry of Economic Affairs, dated September 2024

Emerging ICT technologies are increasingly centered around software capabilities. Core focus areas such as AI, cloud computing, IoT, and automation are expected to drive adoption across various verticals, including transportation, robotics, and healthcare. Key trends to watch include:

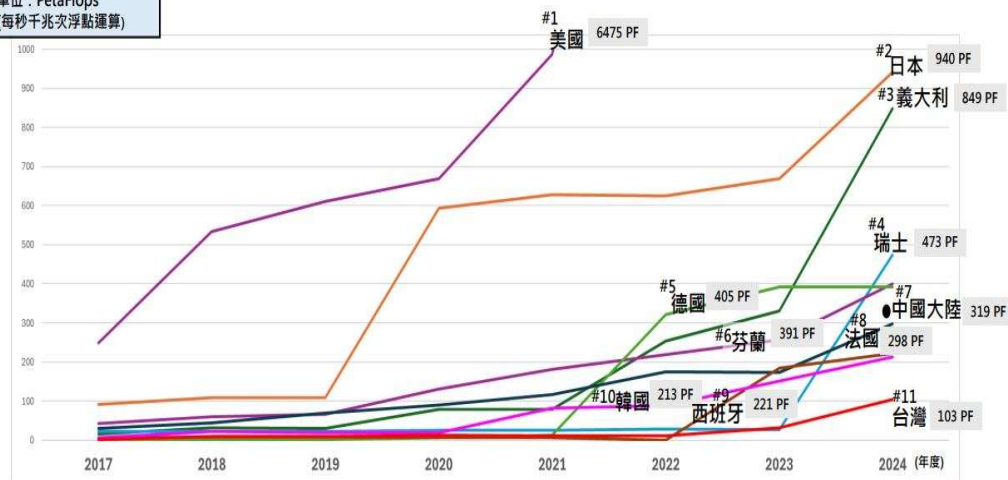
- Real-world deployment of AI technologies
- Heightened focus on cybersecurity

全球算力建置概況

超級電腦運算效能單位：PetaFlops(簡稱PF)
一個PF約等同10萬台高效能個人電腦
(假設個人電腦安裝高階GPU之前提下)

- 自2017年AI技術逐漸普及後，至近年生成式AI興起，各國競逐大型算力市場
- 我國算力已急起直追，公私部門均啟動大型算力建置計畫，依2024年11月19日，全球超級電腦TOP 500 公布之全球算力效能排行最新紀錄，我國為第11名，各國排名如下：

單位：PetaFlops
(每秒千兆次浮點運算)



Source: <https://top500.org/statistics/>

全球超級電腦建置趨勢概況示意圖(算力排行以Rmax-超級電腦實測效能為評估基準)

2

Source: NSTC / iThome, March 2025

Items	National Sovereign AI Vision
Compute Power	National projects such as “Chip Taiwan” and “Southern Silicon Valley” aim to increase national computing capacity to 480 PFLOPS within 5 years
Data Governance	Legislative proposals to promote data utilization. Encouraging government data sharing and private data contributions. Development of sovereign AI training corpora
Sovereign Models	National Science and Technology Council’s TAIDE project. Localized language models using Traditional Chinese. Latest release: Llama 3.1-based 8B model
Regulatory Framework	Draft AI Basic Law introduced to address seven key principles including privacy and accountability. Risk classification under review by the Executive Yuan
Industrial Development	Government initiatives supporting AI startups via compute, funding, and data resources. Private sector efforts include development of local large language models (LLMs) by MediaTek, Project TAME, and Formosa Foundation
Talent Policy	Cross-ministry collaboration among Ministry of Education, NDC, and NSTC. Cultivation of AI talent across academia, industry, and research sectors

Agenda

- Company Overview / Core Business and Services
- Business Performance
- Industry Trends and Market Opportunities
- Growth Strategies
- Corporate Governance and Sustainability
- Q&A



Growth Strategies



Capitalizing on strong demand from both the public and private sectors for green sustainability, AI data center infrastructure, and AI applications



Seizing new business opportunities in smart terminal services, delivering solutions across four pillars: High Productivity, Security, Seamless Connectivity, Enhanced User Experience



OneService:
Continued transition toward customer-centric service-driven growth, aiming for 20% annual service revenue growth



Focusing on network, cybersecurity, data management, and storage solutions to capture hybrid multi-cloud and modern data center opportunities

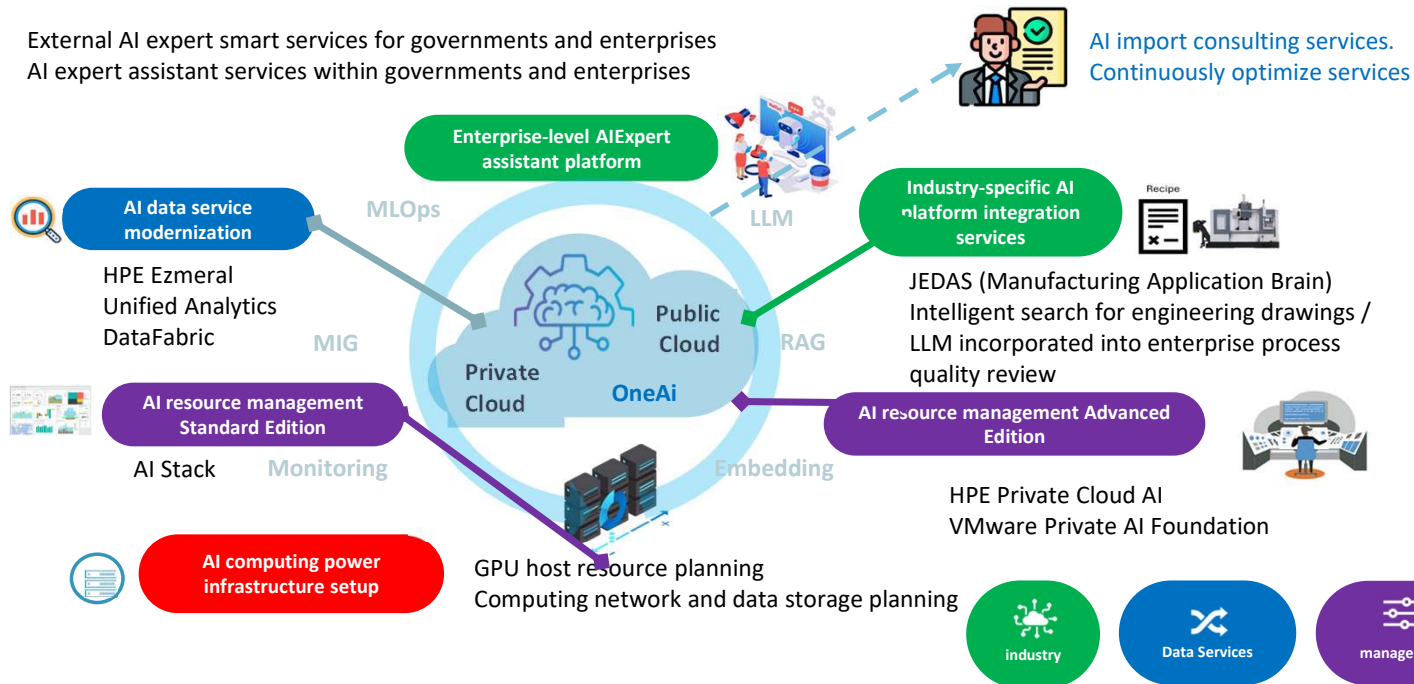


OneAI, OneCloud, Greenergy: Integrated ACE (AI + Cloud + ESG) total solutions addressing industry-specific AI enablement and dual transformation needs



AI Total Solution – OneAi

Computing power & management, data & AI applications



AI / SaaS

AIoT low-carbon toilet,
ESG management,
ibo.ai smart service,
Medical FHIR platform,
Qualtrics XM,
AWS Amazon Connect
Cloud customer service

Unified Communications (UC) and Collaboration Solutions

Enterprise UC Platform



Fund efficient communication platform for enterprises

Designed for large-scale deployment



Regular monthly and quarterly product risk updates



High flexibility for developers: SDK, REST, API integration

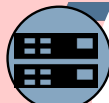


Avaya Workplace



VMware ESXI Support

整合
通訊
與協作



High availability

Wide selection of compatible phone devices



Innovative Architecture



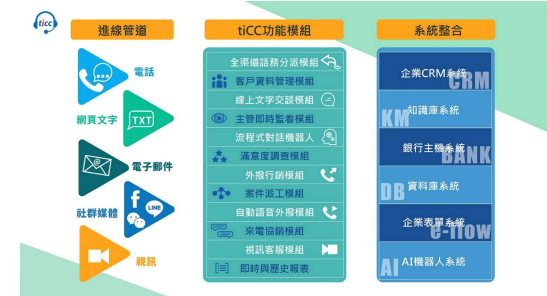
Fully software-defined and virtualized



Mobile Extension Solutions

All-media smart customer service system

Intelligent Contact Center – tiCC



Enhanced customer experience and satisfaction

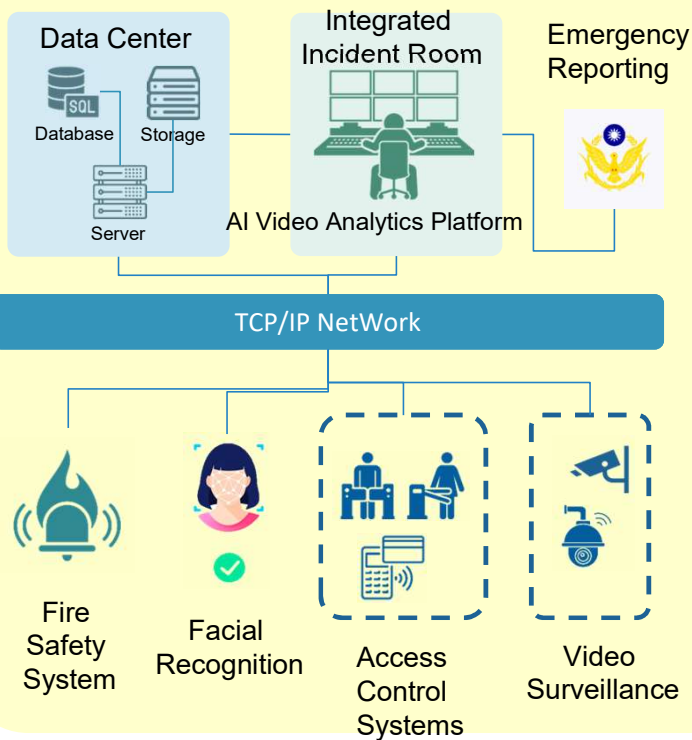
Increased agent efficiency, reduced manpower costs

Virtualized, highly available system architecture lowers maintenance burden

Industry clients: Financial, Retail, Healthcare

Smart Surveillance – Integrated Digital Security

Enterprise security digital transformation



Comprehensive
Integration & Data
Sharing



Flexible Expansion &
Intelligent Control



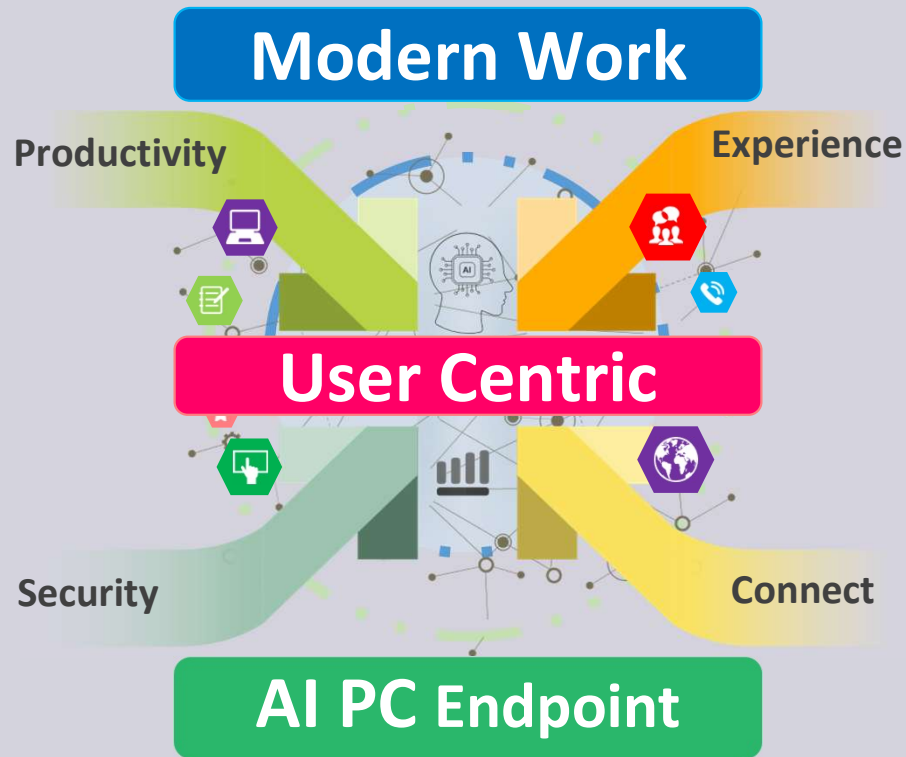
Real-Time Alerts &
Efficient Decision-
Making

Smart Surveillance

Target Markets

Tech Plants
Industrial
Manufacturing
Public Safety
Smart Campus
Financial Services
Healthcare Institutions
Retail & Department
Stores

Modern Work – Intelligent Digital Workplace Solutions



User Centric

Supports remote and hybrid work models. Enhances employee work-life balance and overall experience

Productivity

Cross-functional collaboration through digital tools and automation. AI, machine learning, and cloud services

Security

Asset management protection for digital systems, applications, and data. Defense against cyberattacks and data breaches

Seamless Connectivity

Efficient cloud application integration. Improved productivity and reduced repetitive tasks

Modern Work

AI PC Endpoints

Enhanced

Experience and

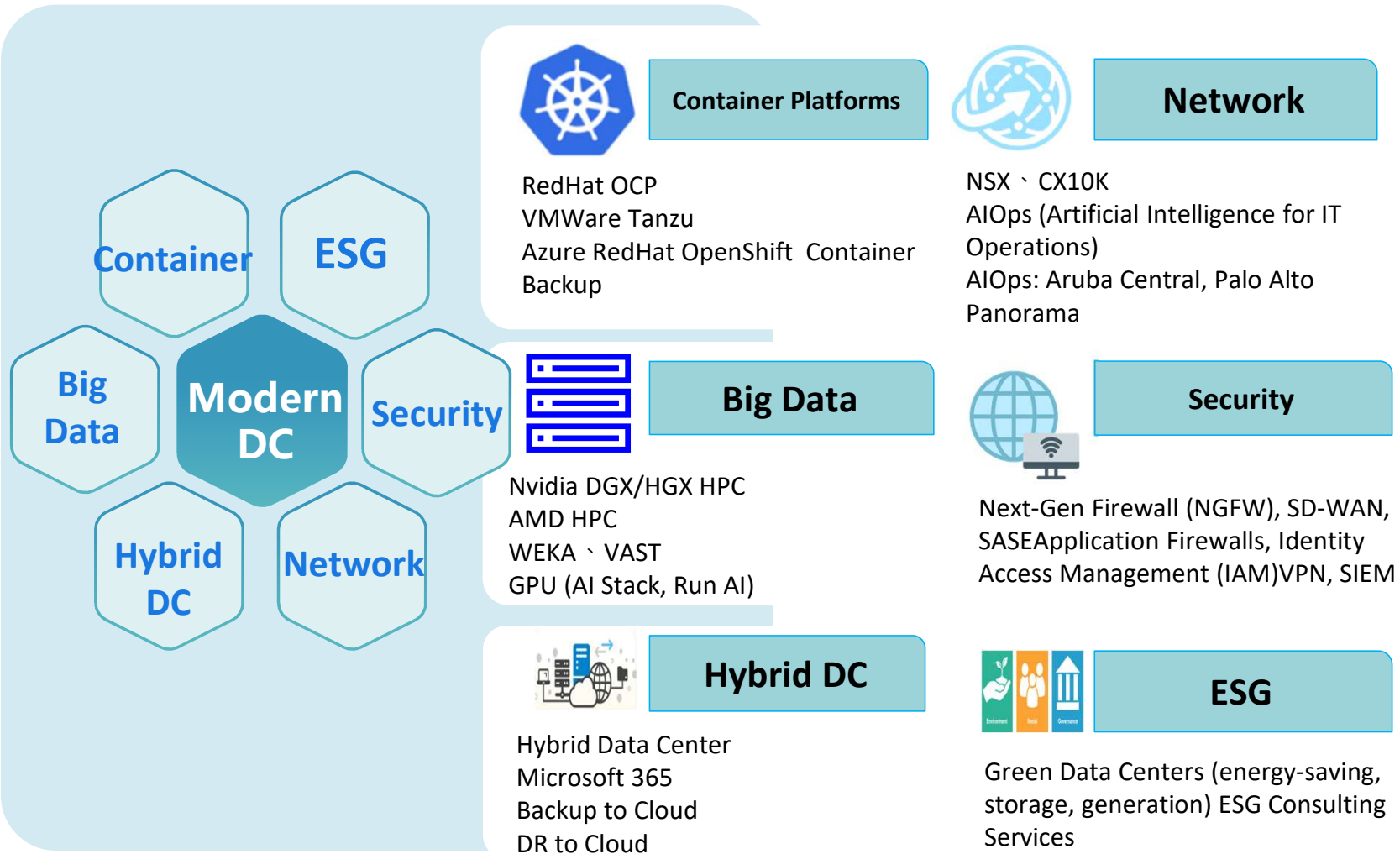
Productivity

Cloud Connectivity

Cybersecurity

Safeguards

Modern Data Center – Integrated Digital Resilience



Modern DC

Solution Emphasis
Network,
Cybersecurity, Data
Management, and
Hybrid Cloud

Key Markets

Banking & Finance
Healthcare Institutions
Retail & Consumer Tech
Manufacturing
Industrial Public Safety

Information Security Protection



Endpoint Security

Endpoint Detection and Response (EDR/MDR/XDR).
Mobile Device Management (MDM).
Identity and Access Management (IAM)

Network Security

Next-Generation Firewall (NGFW) and
Privileged Access Management (PAM).
Secure Access Service Edge (SASE).
Virtual Private Network (VPN)

Application Security

Web Application Firewall (WAF)
Application Identity and Access
Management

Cloud Security

M365 Cloud Security Solutions.
Web Application Firewall (WAF).
Secure Access Service Edge (SASE)

Intranet Protection and Compliance Management

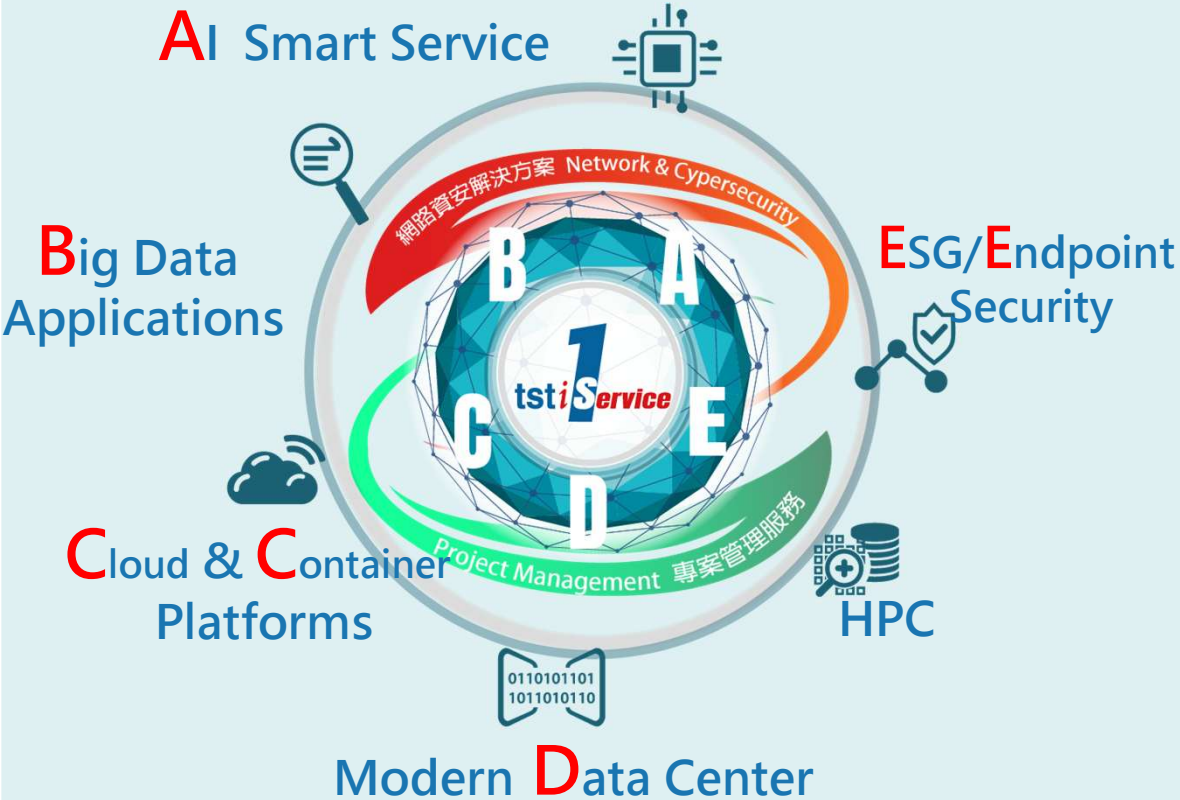
Internal Access Control. Internal Environment
Monitoring and Management. Configuration
Baseline and Compliance Control. Intranet
Asset Security Protection. Security Log
Management within the Internal Network

Professional Deployment, Maintenance, and Advisory Service

- AI-driven cybersecurity architecture planning, implementation, and compliance consultation.
- Deployment and maintenance of AI threat detection systems.
- Automated incident response capabilities. Ongoing operations and system tuning.
- Dedicated cybersecurity consulting services

OneService – Full-Stack Integrated Solutions

From AI to Endpoint 360° Services Across the Stack



A.

AI platform development and deployment.
Nvidia NVAIE integration. ibo.ai intelligent
dialogue service implementation

Big Data

Platform setup and implementation Data Lake services OSI PI for industrial control systems

Cloud & Container

M365 、HPE GreenLake
Container Essential Service
Red Hat 、VMware

Data Center

VMware 、 Windows 、 Linux
Veeam 、 Dell EMC Backup
HPE 、 NetApp 、 Dell EMC ... Storage

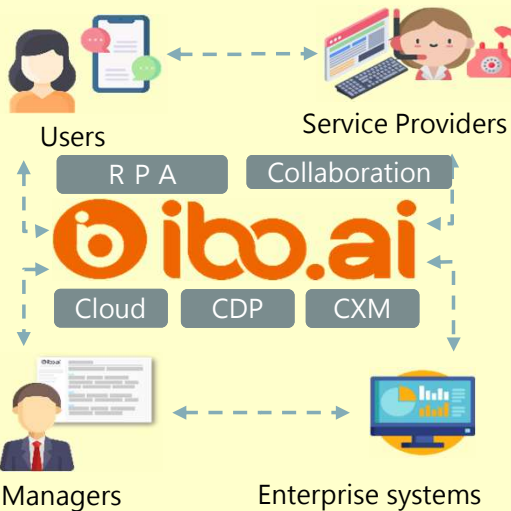
ESG

Endpoint Security

Check Point Harmony EDR/MDR deployment Energy- saving and efficiency improvement solution

Smart service integration expert AI SI

Professional AI trainer and
consultant team



Diversified integration and domain experts

ibo.XaaS: ibo.HR 、 ibo. HelpDesk 、
ibo.Buy



Multivariate model and AI-assisted training

Azure OpenAI Service
LLM · ChatGPT



The best enterprise digital transformation experience



Key Industries

Medical Aesthetics
Automotive Sales
Manufacturing
Government Sectors

ESG AIoT Command Center System

Greenenergy

ESG Total Solutions
Sustainability Transformation Ecosystem

GHG inventory

Energy carbon inventory

ESG AIoT Dashboard

Energy optimization

Saving and reduction

EMS energy management



ESG AIoT Dashboard



EMS energy management



Power optimization,
energy creation and
energy storage



Greenenergy

市場客群

各產業可應用淨零節能

不同階段的解決方案



智慧城市/智慧能源

AIoT Low carbon smart toilet

AIOT technology · comfort and protection



Smart city essential

**AIoT
Low carbon
smart toilet**

Customers

Taipei Performing Arts Center, Taipei
Lungshan Temple Underground
Street, Taoyuan Hutoushan
Environmental Park, Tainan Siraya
National Scenic Area, Kaohsiung
Love River Turtle Lantern
Park, Kaohsiung Port Authority
Tourism Building.

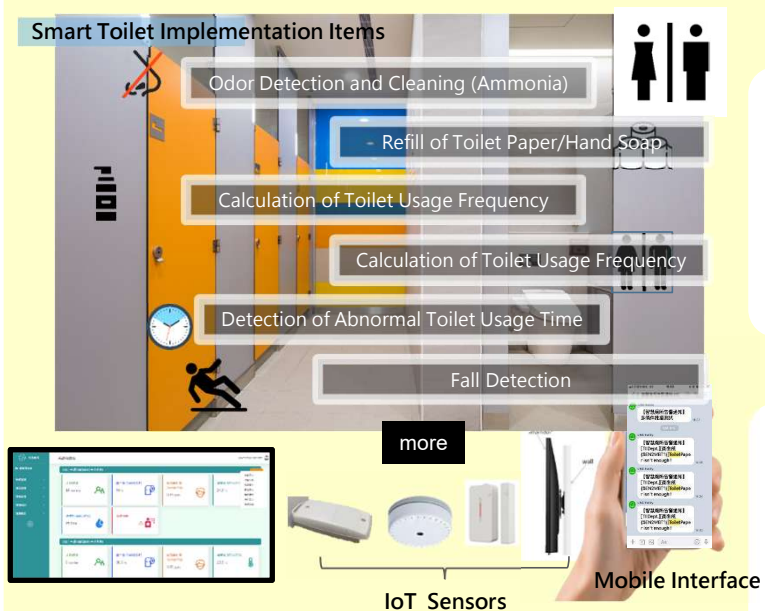
Public Areas



Multi-model service projects



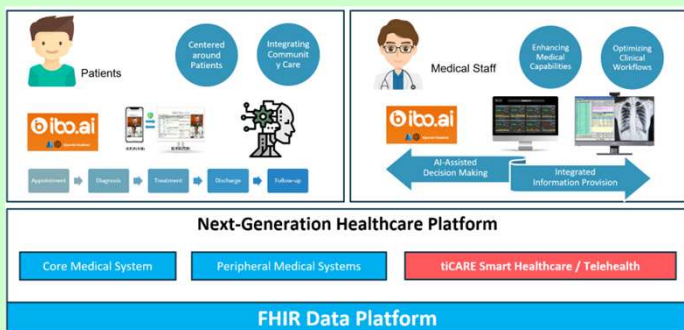
Best application benefit
experience



tiCare Telecare & FHIR

FHIR smart medical

People-oriented smart medical care



AI Smart Healthcare



FHIR smart medical



Next generation medical



Customers

Medical institutions,
long-term care
institutions,
international
medical,
Rural care.

Agenda

- Company Overview / Core Business and Services
- Business Performance
- Industry Trends and Market Opportunities
- Growth Strategies
- Corporate Governance and Sustainability
- Q&A



Corporate Governance and Sustainable Development

Sustainability Disclosure / Risk Management / Fulfilling Corporate Citizenship



E – Environmental

GHG Inventory
ISO 14064-1

#Environmental Sustainability #Climate Policy #Green Initiatives and Actions

- ISO 14064-1 verification (2024–2025)
- Greenhouse gas emission reduction target: 20% reduction by 2030
- Five key green emission reduction initiatives
- Outstanding performance in annual green procurement recognized by Taipei City Government Energy Management Regulations and Waste Management Regulations(2024)
- ESG-Driven Business Models
- Promotion of environmental education and eco-activities.



S – Social

Occupational Health and Safety
ISO 45001

#Friendly Workplace #Diverse Talent Development #Zero Occupational Hazards

- Certified as a “Sports-Friendly Enterprise
- ISO 45001 continuous improvement of workplace environment to ensure employee health and safety
- Increased participation in health checkups
- Ongoing participation in public welfare and support for disadvantaged communities
- New sustainable business models such as telemedicine and AIoT smart restrooms, contributing to carbon reduction and bridging the digital divide
- Industry-academia collaboration to help youth explore career paths and foster future talent.



G – Governance

ISO 27001 ; ISO 20000 ; ISO 27701

#Ethical Governance, Stakeholder Engagement, Business Continuity and Risk Management

- Digital transformation and sustainable transformation dual-axis strategy.
- Corporate governance rating has been improved for two consecutive years, and in 2024, the OTC companies ranked in the top 6%~20% (announced on April 30, 2025).
- Improve risk management,2025.05 Passed certification for ISO 27701 privacy information management.
- In line with international sustainability standards, such as SASB, TCFD and IFRS S2.
- Deepen the sustainable value chain.

Agenda

- Company Overview / Core Business and Services
- Business Performance
- Industry Trends and Market Opportunities
- Growth Strategies
- Corporate Governance and Sustainability
- Q&A





Q&A Feedback

Tatung System Technologies Inc.



Ai



Cloud



ESG

Dual Transformation: Sustainability x Digitalization

Your Trusted Partner in Business Transformation